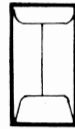


### COIN

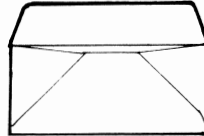
For small parts, coins, stamps, tickets, currency, pills and tablets.



No.	Size
00	1 <sup>11</sup> / <sub>16</sub> x 2 <sup>3</sup> / <sub>4</sub>
1 or A	2 <sup>1</sup> / <sub>4</sub> x 3 <sup>1</sup> / <sub>2</sub>
3 or B	2 <sup>1</sup> / <sub>2</sub> x 4 <sup>1</sup> / <sub>4</sub>
4 or C	3 x 4 <sup>1</sup> / <sub>2</sub>
4 <sup>1</sup> / <sub>2</sub> or D	3 x 4 <sup>7</sup> / <sub>8</sub>
5 or E	2 <sup>7</sup> / <sub>8</sub> x 5 <sup>1</sup> / <sub>4</sub>
5 <sup>1</sup> / <sub>2</sub> or F	3 <sup>3</sup> / <sub>8</sub> x 5 <sup>1</sup> / <sub>2</sub>
6 or G	3 <sup>3</sup> / <sub>8</sub> x 6
7 or H	3 <sup>1</sup> / <sub>2</sub> x 6 <sup>1</sup> / <sub>2</sub>

### BANKERS WALLET FLAP

A deep-flap envelope for bulky business, legal, banking and insurance papers.



No.	Size
10	4 <sup>1</sup> / <sub>8</sub> x 9 <sup>1</sup> / <sub>2</sub>
10 <sup>1</sup> / <sub>2</sub>	4 <sup>1</sup> / <sub>2</sub> x 9 <sup>1</sup> / <sub>2</sub>
11	4 <sup>1</sup> / <sub>2</sub> x 10 <sup>3</sup> / <sub>8</sub>
12	4 <sup>3</sup> / <sub>4</sub> x 11
14	5 x 11 <sup>1</sup> / <sub>2</sub>

### BANK

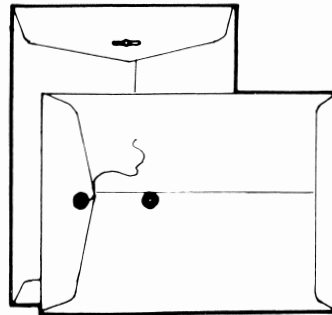
A multi-purpose open side envelope for announcements, cards, and promotion pieces.



No.	Size
5	3 <sup>3</sup> / <sub>4</sub> x 5 <sup>3</sup> / <sub>4</sub>
6	4 <sup>1</sup> / <sub>8</sub> x 6 <sup>1</sup> / <sub>4</sub>
6 <sup>1</sup> / <sub>4</sub>	4 <sup>1</sup> / <sub>2</sub> x 6 <sup>1</sup> / <sub>4</sub>
6 <sup>3</sup> / <sub>4</sub>	4 <sup>1</sup> / <sub>2</sub> x 6 <sup>5</sup> / <sub>8</sub>
7	4 <sup>3</sup> / <sub>8</sub> x 7 <sup>1</sup> / <sub>8</sub>
8	5 x 7 <sup>1</sup> / <sub>2</sub>
8 <sup>1</sup> / <sub>2</sub>	5 <sup>1</sup> / <sub>2</sub> x 7 <sup>1</sup> / <sub>2</sub>
8 <sup>3</sup> / <sub>4</sub>	5 <sup>1</sup> / <sub>2</sub> x 8
8 <sup>7</sup> / <sub>8</sub>	5 <sup>1</sup> / <sub>2</sub> x 8 <sup>1</sup> / <sub>4</sub>

### CLASP AND STRING & BUTTON

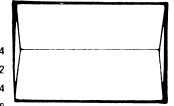
The standard catalog envelope with a metal clasp (flaps gummed) or string and button (flaps ungummed).



No.	Size	No.	Size
5	3 <sup>1</sup> / <sub>8</sub> x 5 <sup>1</sup> / <sub>2</sub>	68	7 x 10
10	3 <sup>3</sup> / <sub>8</sub> x 6	75	7 <sup>1</sup> / <sub>2</sub> x 10 <sup>1</sup> / <sub>2</sub>
15	4 x 6 <sup>3</sup> / <sub>8</sub>	83	8 <sup>1</sup> / <sub>2</sub> x 11 <sup>1</sup> / <sub>2</sub>
11	4 <sup>1</sup> / <sub>2</sub> x 10 <sup>3</sup> / <sub>8</sub>	87	8 <sup>3</sup> / <sub>4</sub> x 11 <sup>1</sup> / <sub>4</sub>
25	4 <sup>3</sup> / <sub>8</sub> x 6 <sup>3</sup> / <sub>4</sub>	90	9 x 12
35	5 x 7 <sup>1</sup> / <sub>2</sub>	93	9 <sup>1</sup> / <sub>2</sub> x 12 <sup>1</sup> / <sub>2</sub>
14	5 x 11 <sup>1</sup> / <sub>2</sub>	95	10 x 12
40	5 <sup>1</sup> / <sub>2</sub> x 7 <sup>1</sup> / <sub>2</sub>	97	10 x 13
50	5 <sup>1</sup> / <sub>2</sub> x 8 <sup>1</sup> / <sub>4</sub>	98	10 x 15
55	6 x 9	105	11 <sup>1</sup> / <sub>2</sub> x 14 <sup>1</sup> / <sub>2</sub>
60	6 x 9 <sup>1</sup> / <sub>2</sub>	110	12 x 15 <sup>1</sup> / <sub>2</sub>
63	6 <sup>1</sup> / <sub>2</sub> x 9 <sup>1</sup> / <sub>2</sub>		

### ANNOUNCEMENT

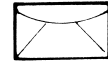
A square flap envelope for announcements, booklets and promotional folders.



No.	Size
A-2	4 <sup>3</sup> / <sub>8</sub> x 5 <sup>3</sup> / <sub>4</sub>
A-6	4 <sup>3</sup> / <sub>4</sub> x 6 <sup>1</sup> / <sub>2</sub>
A-7	5 <sup>1</sup> / <sub>4</sub> x 7 <sup>1</sup> / <sub>4</sub>
A-8	5 <sup>1</sup> / <sub>2</sub> x 8 <sup>1</sup> / <sub>8</sub>
A-Long (Slimline)	3 <sup>7</sup> / <sub>8</sub> x 8 <sup>7</sup> / <sub>8</sub>
A-10	6 x 9 <sup>1</sup> / <sub>2</sub>

### DRUG AND PAY

For pills, tablets, small parts, stamps, coins and currency.



No.	Size
1 Drug	1 <sup>3</sup> / <sub>4</sub> x 2 <sup>7</sup> / <sub>8</sub>
2 Drug	2 <sup>1</sup> / <sub>16</sub> x 3 <sup>1</sup> / <sub>2</sub>
3 Drug	2 <sup>9</sup> / <sub>16</sub> x 3 <sup>5</sup> / <sub>8</sub>
2 Pay	2 <sup>1</sup> / <sub>2</sub> x 4 <sup>1</sup> / <sub>4</sub>

### POLICY

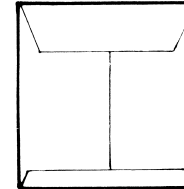
For insurance policies, legal documents and direct mail promotion pieces.



No.	Size
9	4 x 9
10	4 <sup>1</sup> / <sub>8</sub> x 9 <sup>1</sup> / <sub>2</sub>
11	4 <sup>1</sup> / <sub>2</sub> x 10 <sup>3</sup> / <sub>8</sub>
14	5 x 11 <sup>1</sup> / <sub>2</sub>

### SQUARES

For announcements, booklets and promotional pieces.



No.	Size
6 <sup>1</sup> / <sub>2</sub>	6 <sup>1</sup> / <sub>2</sub> x 6 <sup>1</sup> / <sub>2</sub>
7 <sup>1</sup> / <sub>2</sub>	7 <sup>1</sup> / <sub>2</sub> x 7 <sup>1</sup> / <sub>2</sub>
8	8 x 8
8 <sup>1</sup> / <sub>2</sub>	8 <sup>1</sup> / <sub>2</sub> x 8 <sup>1</sup> / <sub>2</sub>
9	9 x 9
9 <sup>1</sup> / <sub>2</sub>	9 <sup>1</sup> / <sub>2</sub> x 9 <sup>1</sup> / <sub>2</sub>

### DOCUMENT FILE OR LEGAL

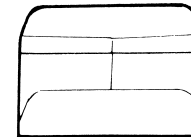
An open side, deep flap, side seam envelope for dual use as a mailing envelope or file envelope.



Size 9<sup>1</sup>/<sub>2</sub> x 12 10 x 15

### SAFETY FOLD

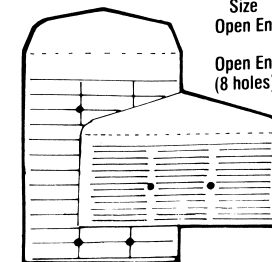
For checks, securities and other valuable documents requiring a tamperproof mailer.



Size
5 x 11
5 <sup>1</sup> / <sub>2</sub> x 11 <sup>1</sup> / <sub>2</sub>
6 x 12

### INTER OFFICE

For use in the distribution of inter departmental mail and correspondence; flaps ungummed. B & S



Size  
Open End ..... 10 x 15

Open End  
(8 holes) ..... 9<sup>1</sup>/<sub>2</sub> x 12<sup>1</sup>/<sub>2</sub>

Open End  
(8 holes) 10 x 13

Open Side  
(2 holes) 4<sup>1</sup>/<sub>2</sub> x 10<sup>3</sup>/<sub>8</sub>